

2025

# Latino Performanc

September 2025



Denver Families  
for Public Schools



# Context and Purpose

## Review of Performance

This presentation is a review of academic performance for Latino students in Denver Public Schools in 2025.

It is intended to be objective in order to inform conversations about next steps, not prescriptive about what those next steps should be.

## Based on publicly available data

It is entirely based on publicly available data from the Colorado Department of Education which limits the availability of some inputs because of data suppression rules and other limitations.

## Based on academic outcomes

The presentation is focused on academic outcomes because we have valid, reliable measures of this— not because it is the only indicator of school quality.





# Latino Student Proficiency 2025

Latino students make up a large percentage of DPS' student body but have low proficiency rates compared to White students.

Grades 3-8 CMAS ELA (25%)



Grades 3-8 CMAS Math (16.7%)



Grade 11 SAT ELA (36.9%)



Grade 11 SAT Math (19.7%)

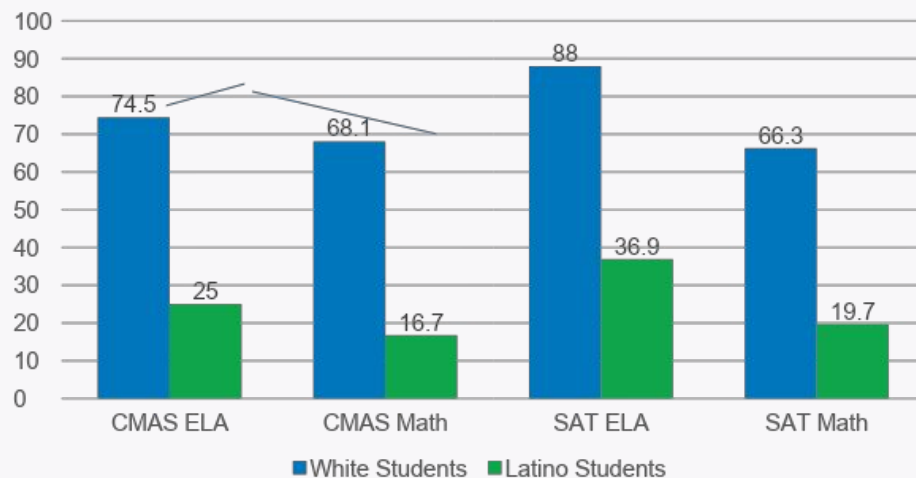




# 2025 Proficiency Rates

Only 1 in 4 Latino students in DPS grades 3-8 are reading at grade level; 1 in 6 are doing math at grade level.

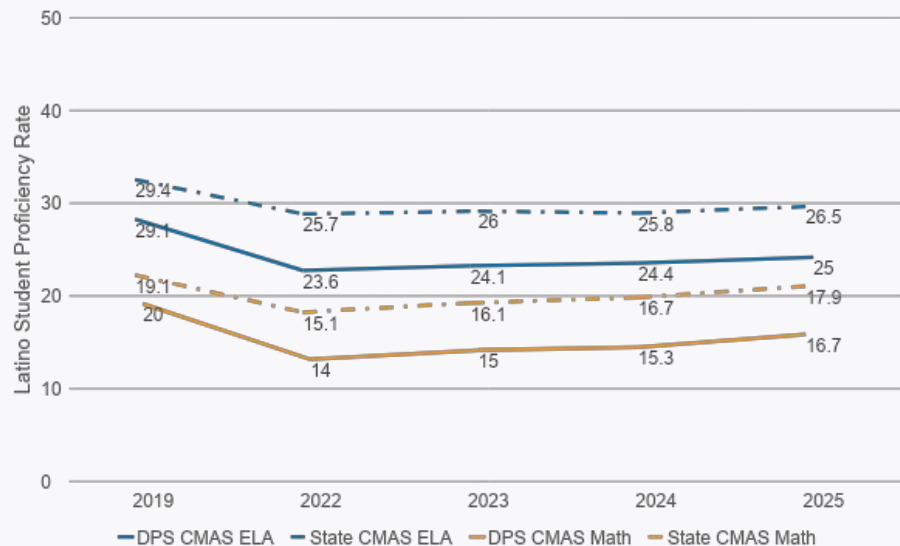
In 11th grade, 1 in 3 Latino students are reading at grade level and 1 in 5 are doing math at grade level.





# Latino Student CMAS Proficiency Over Time

Latino students make up a large percentage of DPS' student body but have low proficiency rates compared to White students.



**Solid Lines**

DPS Performance

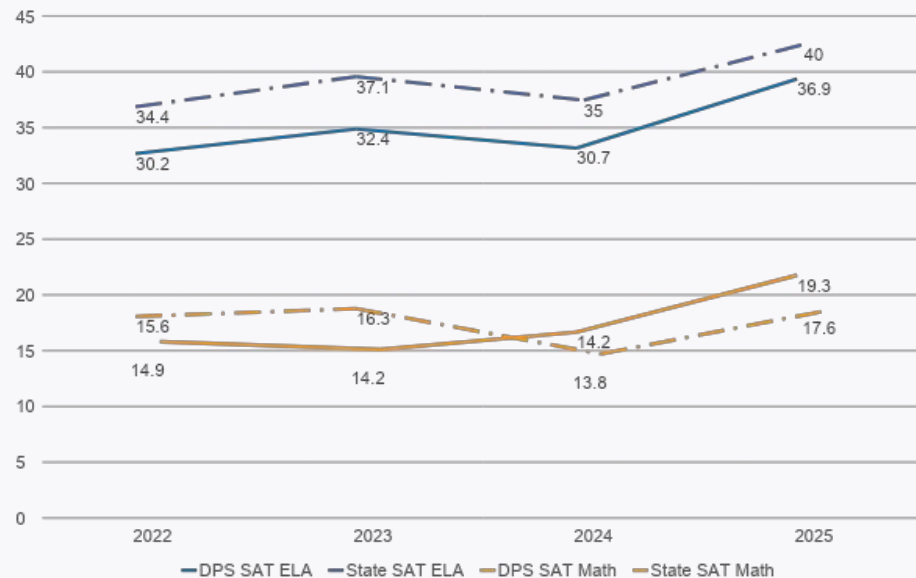
**Dotted Lines**

State Performance



# Latino Student SAT Proficiency Over Time

Latino students in DPS did see an increase on SAT proficiency in 2025 and now outperform their peers statewide in math.



**Solid Lines**

DPS Performance

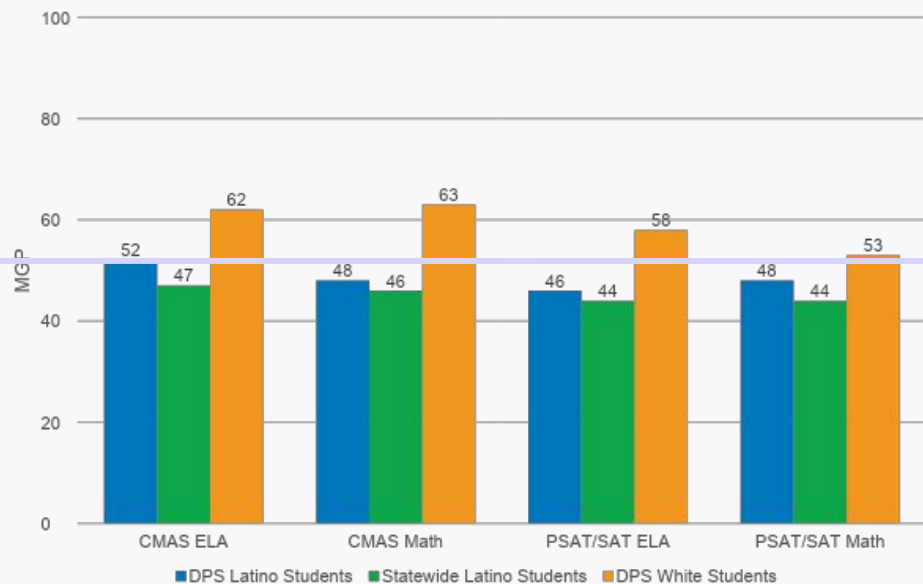
**Dotted Lines**

State Performance



# 2025 Academic Growth

Latino students did see more growth in 2025 than statewide peers, but in many cases it was still less than their academic peers (MGP less than 50). They also saw less growth than white students in DPS, which could lead to widened gaps.



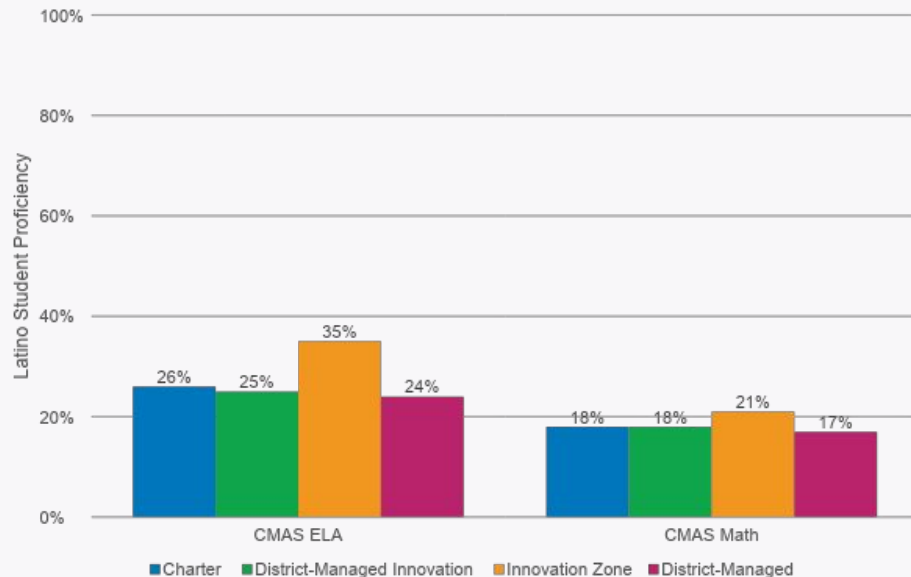
**State Expectation**





# 2025 CMAS Proficiency for Latino Students

Latino student performance did vary by governance type but gaps exist across all governance models.



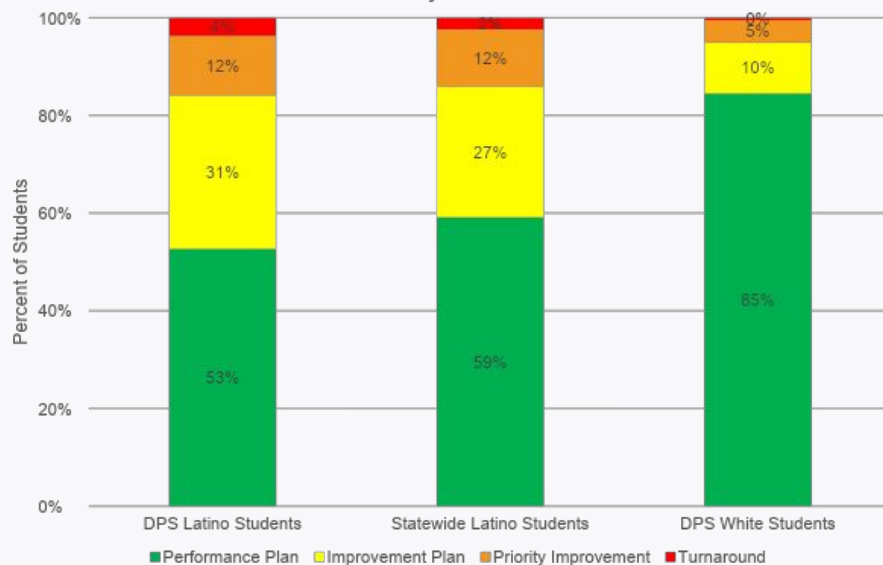
## Note

Due to small N sizes and data suppression the same analysis is not reliable for high schools.



## 2025 Preliminary SPF Performance

Latino students are also less likely to be attending a Performance rated school compared to both Latino students statewide and White students in DPS. Over 20,000 Latino students in DPS are not attending a Performance rated school.





**Some schools did achieve strong results for Latino students and should be studied for best practices.**

## Schools Serving 50%+ Latino Students With Highest CMAS Proficiency Rates\* for Latino Students

School	Proficiency Rate (ELA/Math)	% Latino Students Served
Valdez Elementary School (CMAS ELA and Math)	56.4 / 39.2	72%
Denver Center for International Studie (CMAS ELA)	39.7	72%
Gust Elementary School (CMAS ELA and Math)	39 / 37.8	80%
RMP Ruby Hill (CMAS Math)	35.8	91%
Doull Elementary School (CMAS ELA)	36.1	88%
Sabin World School (CMAS Math)	32.6	56%
University Prep Steele St (CMAS Math)	32.6	62%
DSST GVR MS (CMAS ELA)	35.6	52%

## Schools Serving 50%+ Latino Students With Highest CMAS Proficiency Rates\* for Latino Students (... cont)

School	Proficiency Rate (ELA/Math)	% Latino Students Served
DSST CG HS (SAT ELA and Math)	66.7 / 43.6	66%
DSST GVR HS (SAT ELA and Math)	52.3 / 34.5	56%
Denver Montessori (SAT ELA)	51.9	59%
DSST College View HS (SAT ELA and Math)	50.6 / 34.3	80%
RMP Rise (SAT ELA)	48	67%
DSST Cole HS (SAT Math)	32	80%
DSST Elevate HS (SAT Math)	31.1	67%

\*Selected schools with 5 highest proficiency rates for Latino students on each assessment. Ordered based on proficiency; scores only provided for subjects where schools were strong performances.